



Power **RICH** *System*

A Division of BCI Technologies



www.powerrichsystem.com

Everything you need in a Power SCADA system

Collapse Your Engineering

Our Clients

ARAMCO, Saudi Arabia
Auburn University
Bettis Atomic Power Labs
Black Warrior EMC
CADAFE, Venezuela
Callaway Golf Ball Mfg
Central Valley Electric Co-Op
Chevron
CNFL, Costa Rica
Country of Anguilla
Dixie Escalade
DOFASCO, Canada
ECC, China
Elkem Metals
Florida Power Corporation
Fredricksburg, City of
French Broad EMC
International Paper
Jubail United, Saudi Arabia
Kawaski Heavy Industries
Lakeland, City of
Lehi
Lorillard Tobacco Company
MATEP
Merck & Company
Mid States Energy Work
Modelo Beer
Monsanto, St. Louis
MOTIVA
New Mexico State University
Newtown Creek
Northrup-Grumman
Nucor Steel, Norfolk
PEMEX, Catus Plant, MX
PEMEX, Villahermosa, MX
Pfizer
Phillips Services
Port of Panama
PROMAN, Trinidad
Sabir, Saudi Arabia UHDE
Strawberry, UT
University of Florida
University of Illinois
University of Maryland
University of North Carolina
Village of Swanton

The *Power RICH System* is Windows based SCADA System specifically designed for Power Monitoring and Control Systems using industry standard OPEN protocol (OPC, Modbus, and DNP3.0) and communications media. Our primary design goal was to deliver a solution that dramatically lowered the engineering time required to configure and maintain a system. Ten years ago we recognized that two things were happening in the market: Customers were installing Intelligent Electronic Devices (IED) with communications into substations and the emergence of standardized protocols like DNP3.0 and Modbus. The *Power RICH System* was designed to easily communicate to IEDs in substations and get real-time metering and status data to operational personal.

Rapid Development Software

We designed the *Power RICH System* to dramatically reduce the time required to build a SCADA system. Over the last ten years we have build a library over 60 PRS Device objects which are the building blocks of the system. The objects consists of all Graphics, Communications, Alarm and Historical databases required to interface to most of the major IED manufactures available on the market.

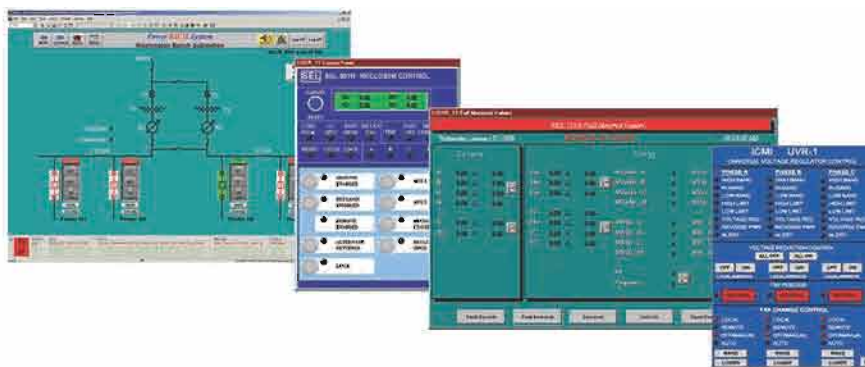
Object Oriented Libraries

We also built an Automatic Configuration Tool called PRS-ACT to build systems by simply selecting the objects (IEDs) needed from our library of over 60 devices and in a matter of minutes, not days we have the system databases configured and ready to run. Then using the built in Graphics builder, the PRS Device Graphic objects are placed onto pre-built Graphic templates to build the One-Line diagrams to represent the Power systems.



Power RICH System

The system features a scalable architecture with built-in mirrored redundancy. It has a network and system expansion capability ranging from one unit to a regional SCADA system with one global database ranging from 75 points to unlimited data points on multiple I/O Servers. This inherent communication ability provides exceptional system performance, as information on status changes from the field can reach the operator's display in less than 2 seconds. Additionally, new security enhancements have been provided like video recording of substation and special areas of the enterprise.



The **Power RICH System** features:

- Quadruple Mirrored Redundancy
- Historian
- Web Server
- E-mail and Text Message
- Alarm Notification
- Crystal Reports Engine
- Relational Database
- On-Line Changes
- Object Oriented Scalable Architecture
- Open Standards
- Modbus, DNP 3, IEC61870, OPC
- Easily Expandable
- Development Software Included

Our Device Library

- ABB - ABB172E
- ABB - AC800C/M
- ABB - DPU2000R
- ABB - GPU
- ABB - INSUM II
- ABB - MSOC
- ABB - PCD
- ABB - REF542+
- ABB - REM543
- ABB - REM610
- ABB - SPACOM Relays
- ABB - TPU2000R
- Alstom - 343
- Alstom - 631-32
- Alstom - M301
- Alstom - PM141-143
- Basler - 851
- Basler - 951
- Beckwith - 3425
- Beckwith - IDD
- Beckwith - LTC Unit
- Beckwith - M2001-B
- Cooper - Form 3
- Cooper - Form 4
- Cooper - Form 5
- Cooper - Form 6
- Cutler Hammer - Through Netlink
- GE - Multilin MIF II
- GE - Multilin PQM
- GE - UR Series F60, G60, T60
- PML - 3720, 6200, 7330,
- PML - 7500, 7600, 7700,
- PML - 83-8500
- Qualitrol - Devices
- Qualitrol - Hathaway
- Qualitrol - Transformer
- Regulators - ICMI LTC
- Regulators - ICMI UVR-1
- Regulators - Siemens MJX
- SATEC - All Meters
- SEL - All units
- Doble - IDD
- Doble - Other Transformer Sensors
- Square D - 2200 Series
- Square D - CM Series



Can Your SCADA System DO THIS?

Quadruple Mirrored Redundancy
Historian
Web Server
E-mail and Text Message Alarm Notification
Crystal Reports Engine
Relational Database
On-Line Changes
Object Oriented Scalable Architecture
Over 60 IED Library Objects
Open Standards - Modbus, DNP 3, IEC61870, OPC
Easily Expandable, Development Software Included

Systems Starting at \$10,000 Include:

Power RICH System SCADA Software
Device Server
Dell Computer
Pre-Configured Historian
Pre-Configured E-mail Alarm Notification
Pre-Configured IED Devices
One-Line Animated Graphics
On-Site Commissioning
One Year Support

Delivering SCADA systems from 500 to 250,000 points for the past 17 years

